

# RUTILE 85



## GENERAL SPECIFICATION

### CHEMICAL ANALYSES

<b>TiO<sub>2</sub></b>	Guaranteed	85.0 %min
	Typical	87% max
<b>S</b>	Guaranteed	0.03 max
	Typical	<0.01 - 0.02
<b>Al<sub>2</sub>O<sub>3</sub></b>	Typical	0.1 - 0.4
<b>CaO</b>	Typical	0.01 - 0.04
<b>Cr<sub>2</sub>O<sub>3</sub></b>	Typical	0.1 - 0.2
<b>Fe<sub>2</sub>O<sub>3</sub></b>	Typical	3.50 - 4.60
<b>MgO</b>	Typical	0.01 - 0.07
<b>MnO</b>	Typical	0.005 - 0.03
<b>Nb<sub>2</sub>O<sub>5</sub></b>	Typical	0.25 - 0.35
<b>P<sub>2</sub>O<sub>5</sub></b>	Typical	0.01 - 0.04
<b>SiO<sub>2</sub></b>	Typical	3.5 - 6.5
<b>Sn (ppm)</b>	Typical	300 - 800
<b>Th (ppm)</b>	Typical	20 - 50
<b>U (ppm)</b>	Typical	20 - 50
<b>V<sub>2</sub>O<sub>5</sub></b>	Typical	0.35 - 0.55
<b>ZrO<sub>2</sub></b>	Typical	2.5 - 3.5
<b>Moisture</b>	Typical	0.01 - 0.10

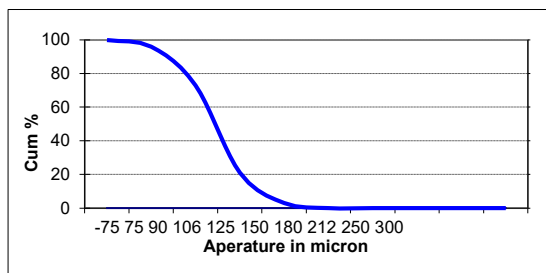
### SIZE DISTRIBUTION

Sieves from British Standard BS410:1986 and American Standard ASTM E-11-81			
Mesh No	Sieve Aperture (µm)	% Retained	
		Typical	Range
52	300	0	0 - 1
60	250	0	0 - 1
70	212	0	0 - 1
85	180	0	0 - 1
100	150	0	0 - 5
120	125	3	2 - 10
140	106	18	10 - 30
170	90	52	40 - 60
200	75	23	10 - 30
-200	-75	4	0 - 10

D50 = 97

AFS = 134

Typical AFS No: 130 - 140



TiO<sub>2</sub> on a "dry" basis, all other analyses "as received"

TYPICAL PHYSICAL PROPERTIES		OTHER INFORMATION
(Data from mineralogy and chemistry text books denoted with *)		
Specific gravity*	4.2	See www.tronox.com for Material Safety Data Sheets
Bulk density (kg/m <sup>3</sup> )	2600	
Angle of repose (°)	31	
	Loss on Ignition (%)	0.16 - 0.24

*RUTILE 85 is produced at Tronox Minerals Corp Midwest operations in Western Australia. RUTILE 85 is a natural product and as such slight variations in the chemical analysis and size distribution should be expected. Special contracts covering guarantees other than those specified may be negotiated.*

For further information contact at [www.tronox.com](http://www.tronox.com) :

This specification supersedes any former publication and is subject to change without notice. The technical advice contained herein is based on tests believed to be reliable and is offered as a helpful suggestion, it being expressly understood that all such advice being given and accepted at buyer's risk. This information is not a licence to operate under, nor intended to suggest infringement of any existing patents.